

HCMOS/TTL OSCILLATOR

Ceramic Surface Mount *EC26* Series 3.3V_{DC}



PART NUMBERING GUIDE

EC26 00 ET T TS - 40.000M TR

FREQUENCY TOLERANCE / STABILITY

00=±100ppm Maximum (Standard)
45=±50ppm Maximum, 25=±25ppm Maximum
20=±20ppm Maximum

OPERATING TEMPERATURE RANGE

Blank=-10°C to 70°C (Standard)
ET=-40°C to 85°C

PACKAGING OPTIONS

Blank=Bulk, TR=Tape and Reel (Standard) (pg. L1)

FREQUENCY

DUTY CYCLE

Blank=50 ±10% (Standard), T=50 ±5%

ELECTRICAL SPECIFICATIONS

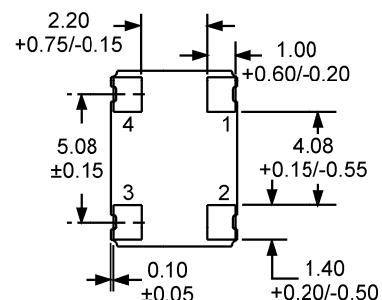
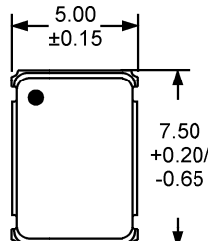
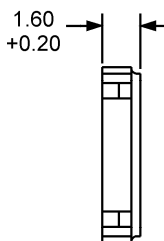
Marking Specifications See pg. G2, Group I

Frequency Range		1.544MHz to 125.000MHz
Operating Temperature Range	±100ppm or ±50ppm	-10°C to 70°C or -40°C to 85°C
	±25ppm or ±20ppm	-10°C to 70°C
Storage Temperature Range		-55°C to 125°C
Supply Voltage (V_{DD})		3.3V _{DC} ±10%
Input Current	1.544MHz to 36.000MHz	10mA Maximum
	36.001MHz to 50.000MHz	18mA Maximum
	50.001MHz to 70.000MHz	20mA Maximum
	70.001MHz to 125.000MHz	40mA Maximum
Standby Current	Pin 1 = Ground	10µA Maximum
Frequency Tolerance / Stability	Inclusive of Operating Temperature Range, Supply Voltage, and Load	±100ppm or ±50ppm, ±25ppm or ±20ppm Max.
Output Voltage Logic High (V_{OH})	w/HCMOS or TTL Load	90% of V _{DD} Min. I _{OH} = -8mA
Output Voltage Logic Low (V_{OL})	w/HCMOS or TTL Load	10% of V _{DD} Max. I _{OL} = 8mA
Rise / Fall Time	10% to 90% of Waveform w/HCMOS Load; 0.4V _{DC} to 2.4V _{DC} w/TTL Load	5 nSeconds Maximum
Duty Cycle	at 1.4V _{DC} w/TTL Load; at 50% of Waveform w/HCMOS Load	50 ±10% (Standard)
	at 50% of waveform w/TTL Load or w/HCMOS Load	50 ±5% (Optional)
Load Drive Capability	≤70.000MHz	10LSTTL Load or 15pF HCMOS Load
	>70.000MHz	15pF HCMOS Load
Pin 1 Tri-State Input Voltage	No Connection	Enables Output
	V _{IH}	+0.7V _{DC} Minimum to Enable Output
	V _{IL}	+0.3V _{DC} Maximum to Disable Output
Aging (at 25°C)		±5ppm / year Maximum
Start Up Time		10 mSeconds Maximum
Absolute Clock Jitter		±100pSeconds maximum
One Sigma Clock Period Jitter		±25pSeconds Maximum

MECHANICAL DIMENSIONS

Environmental / Mechanical Specifications See pg. H2, Group E

Pin 1: No Connect or Power Down
Pin 2: Case Ground
Pin 3: Output
Pin 4: Supply Voltage



Dimensions in mm

3545 Cadillac Avenue, Costa Mesa, CA., 92626-1401 • Phone: (714) 433-1200 • Fax: (714) 433-1234

E15

Email: sales@ecliptek.com • Internet: <http://www.ecliptek.com>

Specifications subject to change without notice. • Contact factory for latest revision • 1/99 • (OS30)